



Frank Marks
HomeCheckr

A handwritten signature in black ink, appearing to read 'Frank Marks', located below the printed name.

HOMECHECKR REPORT

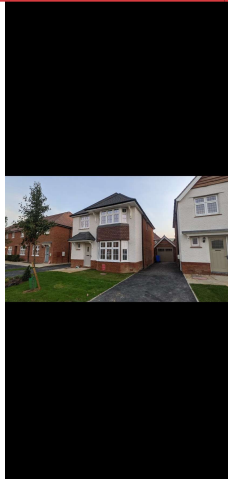
REGENT QUAY - PLOT 50

Tuesday, 01 November 2022

Prepared For SAMPLE

154 Issues Identified

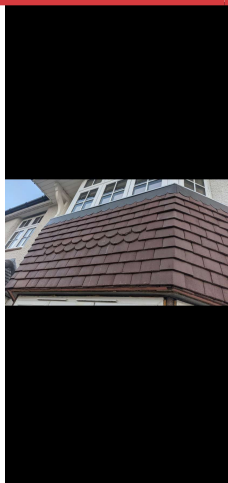
4 BEDROOM DETACHED



ISSUE 2

Location Externals

Some loose hanging tiles to bay window



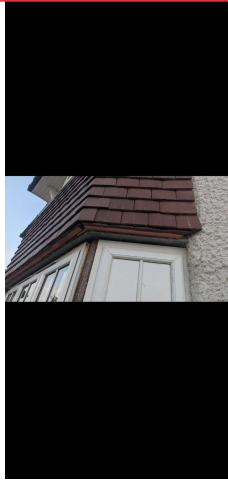
ISSUE 3

Location Externals

Poor workmanship

- Half round hanging tiles poorly cut





ISSUE 4

Location Externals

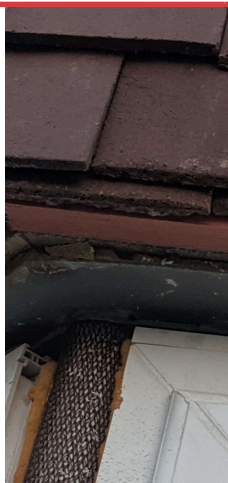
Window thresholds do not meet NHBC criteria



ISSUE 5

Location Externals

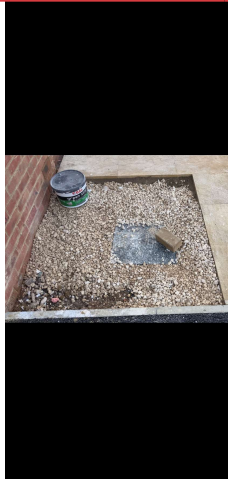
Bay window framing not complete



ISSUE 6

Location Externals

Window thresholds do not meet NHBC criteria

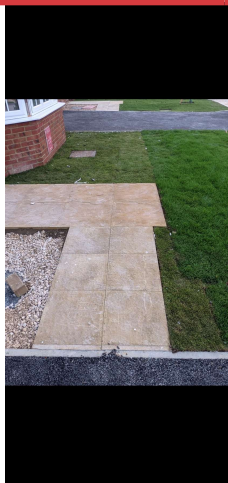


ISSUE 7

Location Externals

Poor workmanship

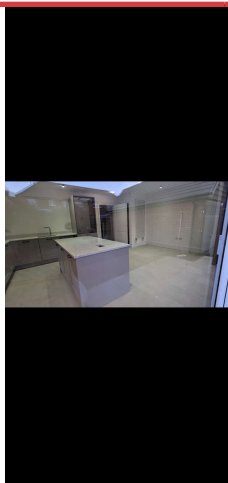
- Level out stones / need more
- Clean drainage lid
- Remove paint



ISSUE 8

Location Externals

Entrance slabs are a mixture of sizes and textures. Width measured at 598mm. NHBC guidance shows 600mm plus. Slabs to be changed.



ISSUE 9

Location Externals

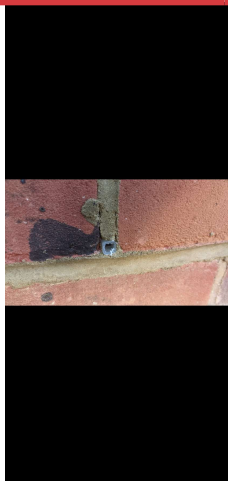
Window scratch to back door glass



ISSUE 10

Location Externals

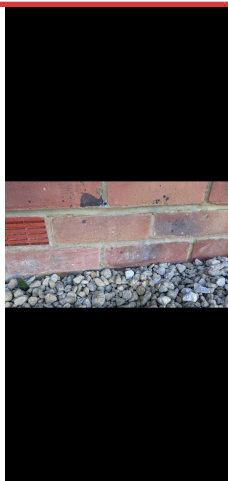
DPC showing through mortar



ISSUE 11

Location Externals

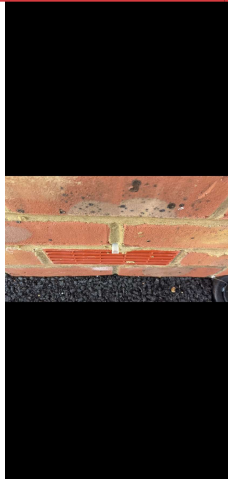
Some Weep vents are filled with mortar, these are to be clear of debris allowing moisture to pass through cavity



ISSUE 12

Location Externals

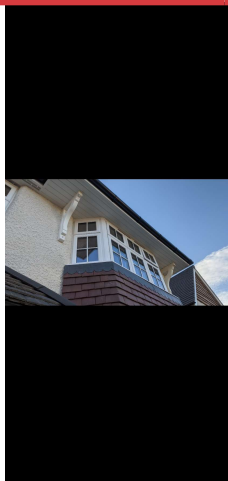
Air flow vents filled with debris and mortar



ISSUE 13

Location Externals

Weep vents incorrectly fitted

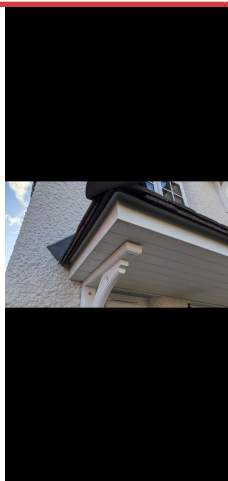


ISSUE 14

Location Externals

Gallow brackets are different colours

Fixing covers missing



ISSUE 15

Location Externals

Porch gallow bracket not fitted correctly

Fixing cover missing



ISSUE 16

Location Externals

Poor workmanship



ISSUE 17

Location Externals

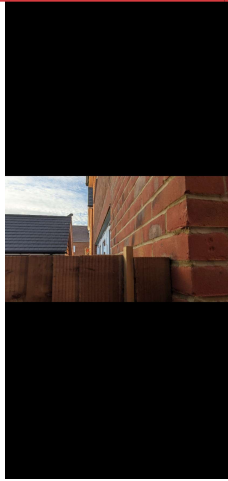
Poor workmanship



ISSUE 18

Location Externals

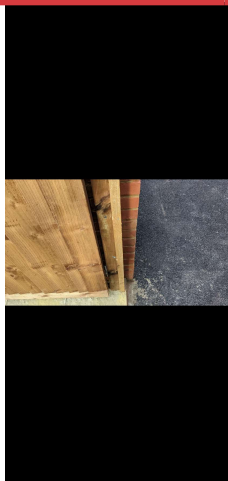
Protection film not removed



ISSUE 19

Location Externals

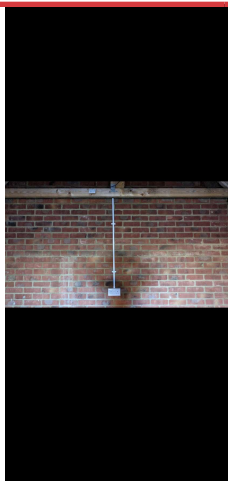
Poor workmanship



ISSUE 20

Location Externals

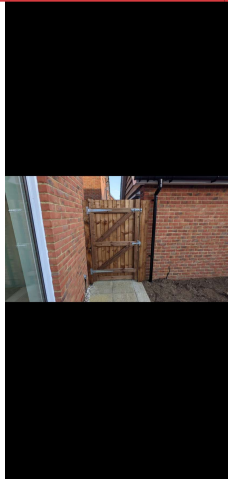
Back gate not fitted level



ISSUE 21

Location Garage

Garage power socket not working



ISSUE 22

Location Externals

Back gate not fitted square or level



ISSUE 23

Location Externals

Protection film not removed



ISSUE 24

Location Garage

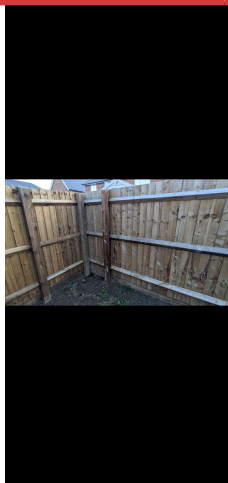
Garage blown brick



ISSUE 25

Location Garage

Garage Fascia covered in mortar



ISSUE 26

Location Externals

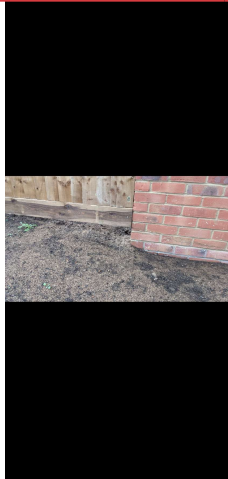
Back fence covered in cement splatters



ISSUE 27

Location Externals

Radiation membrane showing through mortar



ISSUE 28

Location Externals

Side fence in garden showing huge gap that needs a gravel board to cover



ISSUE 29

Location Externals

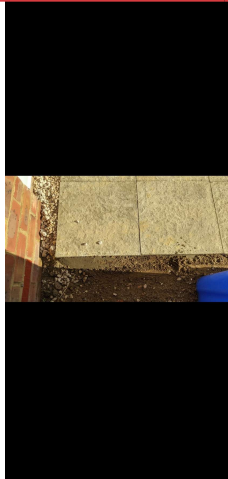
Damaged trickle vent



ISSUE 30

Location Externals

Protection film not removed



ISSUE 31

Location Externals

Garden slab loose and rocking



ISSUE 32

Location Externals

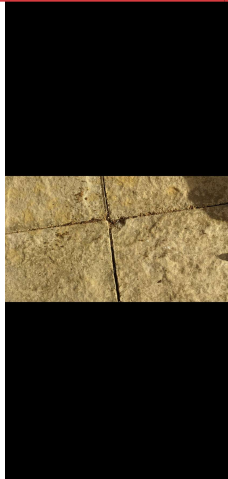
Garden slab damage



ISSUE 33

Location Externals

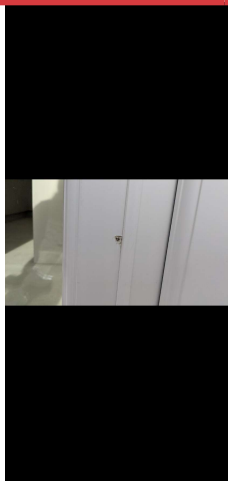
Garden slab damage



ISSUE 34

Location Externals

Garden slab damage



ISSUE 35

Location Externals

French door to rear damage



ISSUE 36

Location Garage

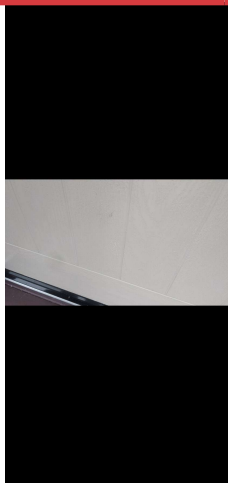
Garage Fascia damage



ISSUE 37

Location Externals

Front door poorly painted



ISSUE 38

Location Externals

Front door damage



ISSUE 39

Location Externals

Poor workmanship



ISSUE 40

Location Garage

Garage door Fascia damaged



ISSUE 41

Location Garage

Paint on garage door glass



ISSUE 42

Location Garage

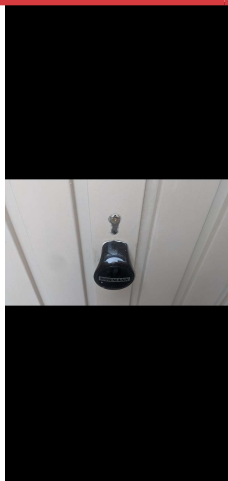
Poor workmanship



ISSUE 43

Location Garage

Poor workmanship



ISSUE 44

Location Garage

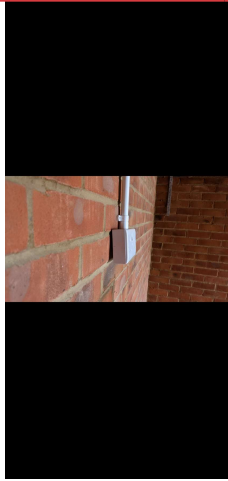
Garage door handle temperamental



ISSUE 45

Location Externals

No bulb fitted to external light



ISSUE 46

Location Garage

Poor workmanship



ISSUE 47

Location Internals

Rip in loft breather membrane



ISSUE 48

Location Externals

Poor workmanship



ISSUE 49

Location Externals

Melted cable to main power inlet. Fire hazard.



ISSUE 50

Location Externals

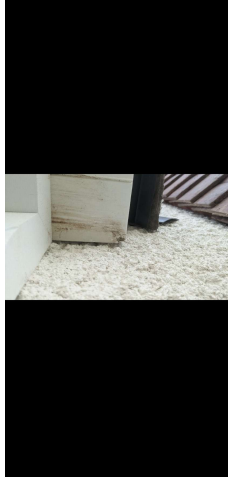
Threshold not filled



ISSUE 51

Location Externals

Porch damage



ISSUE 52

Location Externals

Porch damage



ISSUE 53

Location Externals

Poor workmanship



ISSUE 54

Location Internals

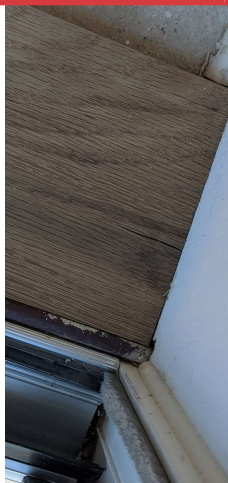
Front door seal damage



ISSUE 55

Location Internals

Poor workmanship



ISSUE 56

Location Internals

Poor workmanship



ISSUE 57

Location Corridor

Poor workmanship



ISSUE 58

Location W/C

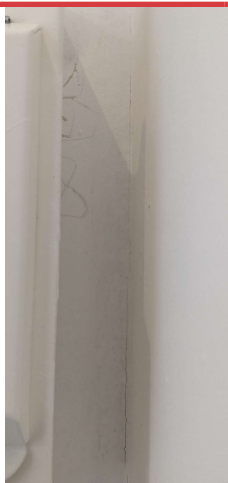
Overpaint on window frame



ISSUE 59

Location W/C

Poor workmanship



ISSUE 60

Location W/C

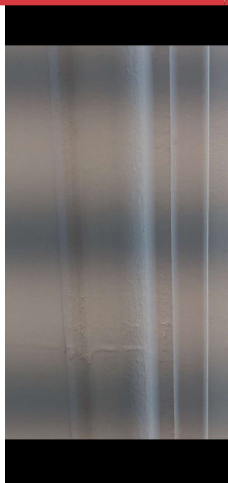
Wall not decorated



ISSUE 61

Location W/C

Overpaints to fixtures



ISSUE 62

Location W/C

Poor workmanship



ISSUE 63

Location Lounge

Screws missing to hinges



ISSUE 64

Location Kitchen

- Overpaint to unit
- No mastic seal



ISSUE 65

Location Lounge

Handle damage



ISSUE 66

Location Lounge

Handle damage



ISSUE 67

Location Lounge

Door damage



ISSUE 68

Location Lounge

Poor workmanship



ISSUE 69

Location Lounge

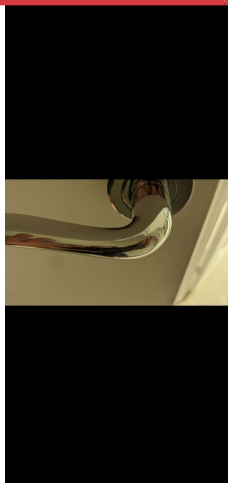
Protection film not removed



ISSUE 70

Location Lounge

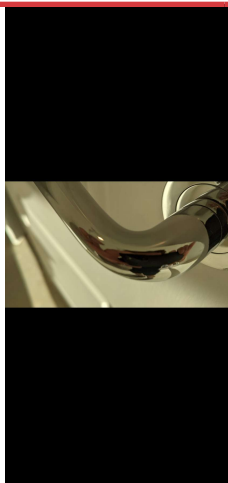
- Overpaint to window frame
- Marks on window frame



ISSUE 71

Location W/C

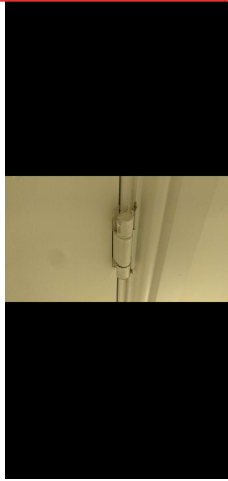
Handle damage



ISSUE 72

Location Kitchen

Handle damage



ISSUE 73

Location Understair Cupboard

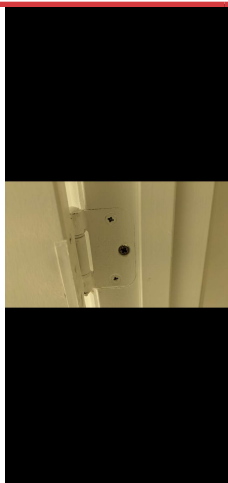
- Hinge paint peel
- Hinge cranked too much damaging frame



ISSUE 74

Location Ensuite

Extraction fan not working



ISSUE 75

Location Ensuite

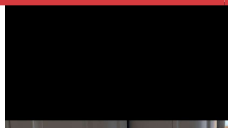
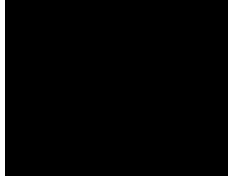
Different screws used



ISSUE 76

Location Lounge

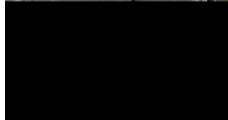
Marks on window frame



ISSUE 77

Location Lounge

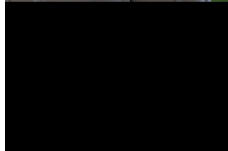
Marks on window frame

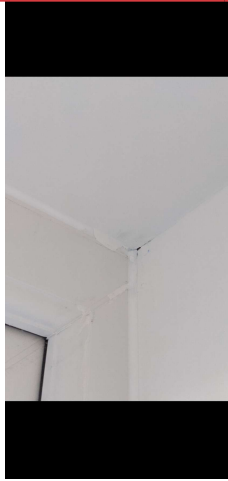


ISSUE 78

Location Lounge

Marks on window frame

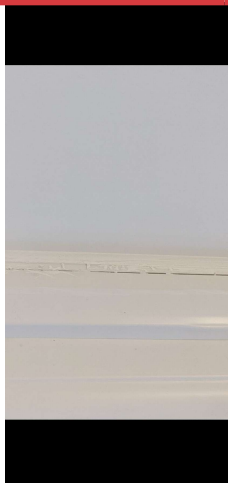




ISSUE 79

Location Kitchen

Poor workmanship



ISSUE 80

Location Staircase

Poor workmanship



ISSUE 81

Location Staircase

Overpaint to window frame



ISSUE 82

Location Lounge

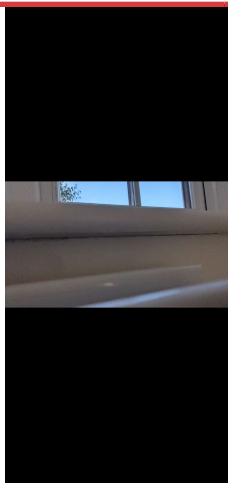
Poor workmanship



ISSUE 83

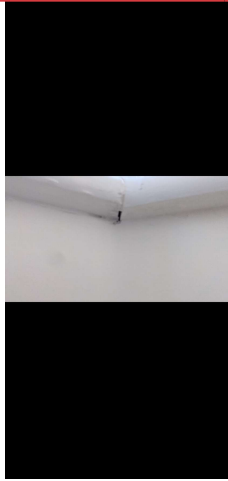
Location Lounge

Poor workmanship



ISSUE 84

Poor workmanship



ISSUE 85

Location Lounge

Poor workmanship



ISSUE 86

Location Lounge

No brushes fitted



ISSUE 87

Location Lounge

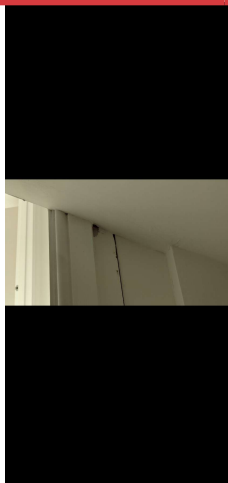
Poor workmanship



ISSUE 88

Location Corridor

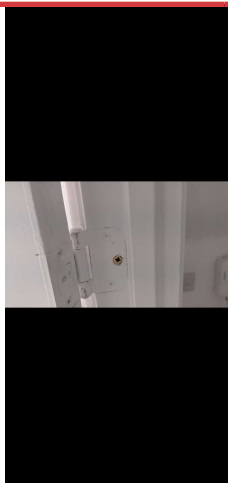
Stair timber work damage



ISSUE 89

Location Understand Cupboard

Poor workmanship



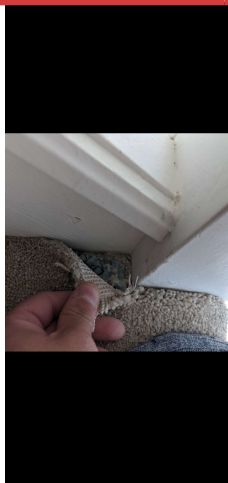
ISSUE 90

Location Understair Cupboard

Different screws used



ISSUE 91
Location Staircase
Poor workmanship



ISSUE 92
Location Staircase
Carpet not fitted correctly



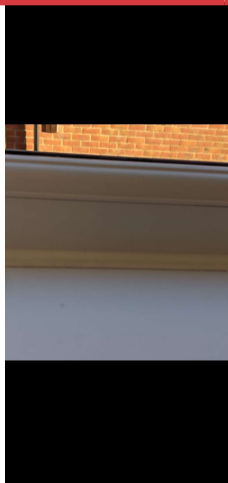
ISSUE 93
Location Staircase
Poor workmanship



ISSUE 94

Location Staircase

Wall damage



ISSUE 95

Location Staircase

Mastic peeling



ISSUE 96

Location Staircase

Handrail huge splinter damage



ISSUE 97

Location Staircase

Cap damage



ISSUE 98

Location Store Room

Overpaint to handle



ISSUE 99

Location Bedroom 2

Poor workmanship



ISSUE 100

Location Bedroom 2

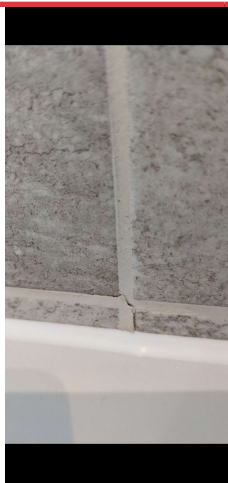
Overpaint to handle



ISSUE 101

Location Landing

Wall damage



ISSUE 102

Location Bathroom

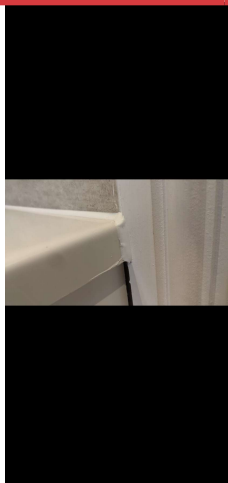
Grout missing



ISSUE 103

Location Bathroom

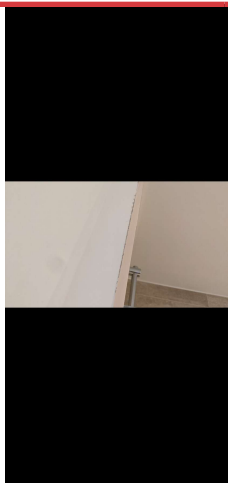
Poor workmanship



ISSUE 104

Location Bathroom

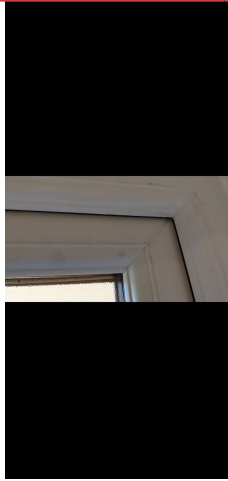
Poor workmanship



ISSUE 105

Location Bathroom

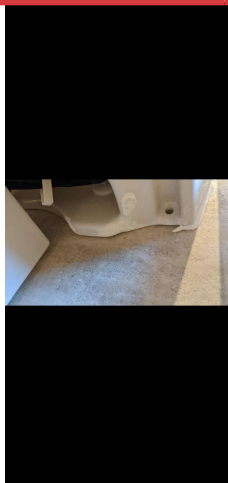
No silicone to tiles



ISSUE 106

Location Bathroom

Marks on window frame



ISSUE 107

Location Bathroom

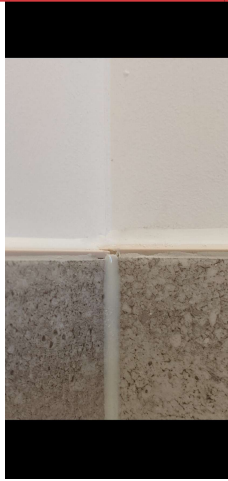
- Sink not mechanically fixed
- Overpaint to sink
- Poor workmanship



ISSUE 108

Location Bathroom

- Sink not mechanically fixed
- Overpaint to sink
- Poor workmanship



ISSUE 109

Location Bathroom

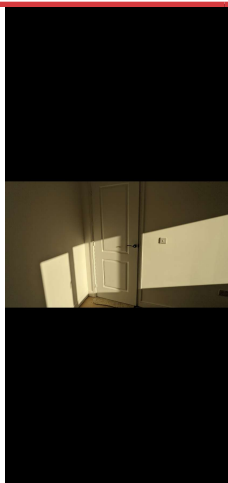
Poor tile leveling



ISSUE 110

Location Bedroom 2

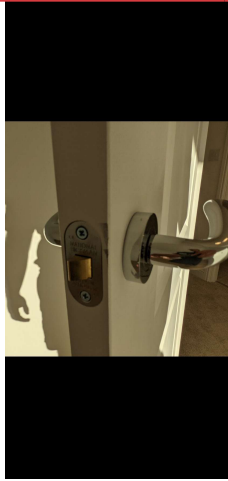
Handle damage



ISSUE 111

Location Bedroom 2

Door doesn't shut in frame



ISSUE 112

Location Bedroom 2

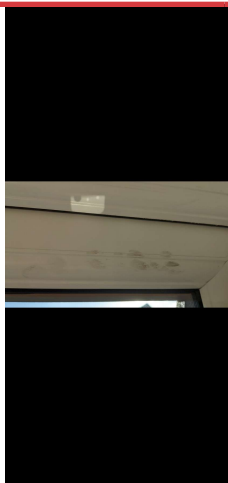
Door damage



ISSUE 113

Location Bedroom 2

Protection film not removed



ISSUE 114

Location Bedroom 2

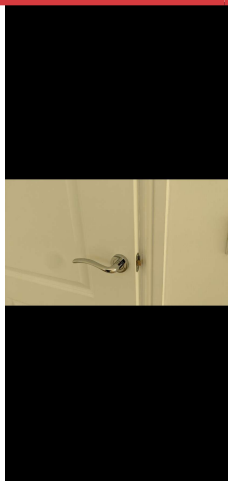
Marks on window frame



ISSUE 115

Location Bedroom 4

Door doesn't shut in frame



ISSUE 116

Location Bedroom 3

Door doesn't shut in frame



ISSUE 117

Location Bedroom 3

Overpaint to window frame



ISSUE 118

Location Bedroom 1

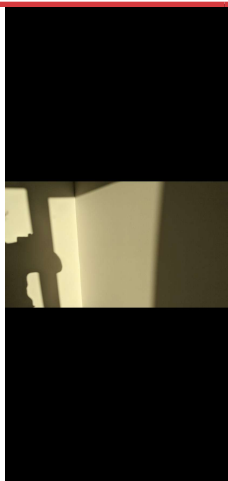
Poor workmanship



ISSUE 119

Location Bedroom 4

Wall damage



ISSUE 120

Location Bedroom 2

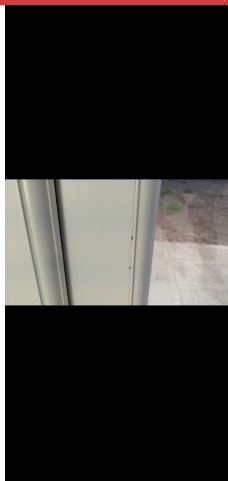
Wall damage



ISSUE 121

Location Kitchen

Threshold poor workmanship



ISSUE 122

Location Kitchen

Protection film not removed



ISSUE 123

Location Kitchen

Sink liner damage



ISSUE 124

Location Kitchen

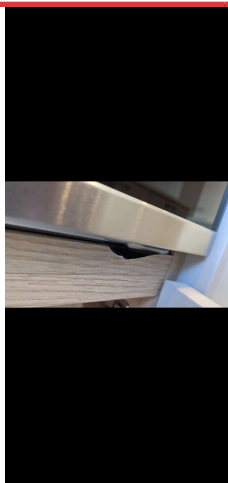
Threshold poor workmanship



ISSUE 125

Location Kitchen

Light hanging down, not fitted correctly



ISSUE 126

Location Kitchen

Poor workmanship



ISSUE 127

Location Kitchen

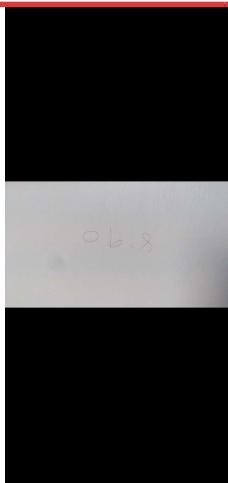
Poor workmanship



ISSUE 128

Location Kitchen

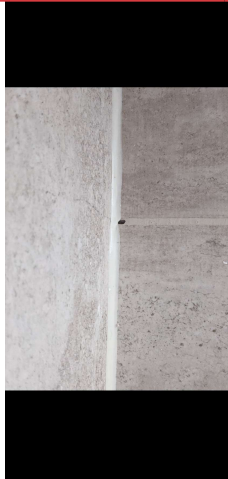
Unit door damage



ISSUE 129

Location Kitchen

Pencil markings on Kitchen unit



ISSUE 130

Location Bathroom

Grout missing



ISSUE 131

Location Bathroom

Poor workmanship



ISSUE 132

Location Ensuite

Marks to shower threshold



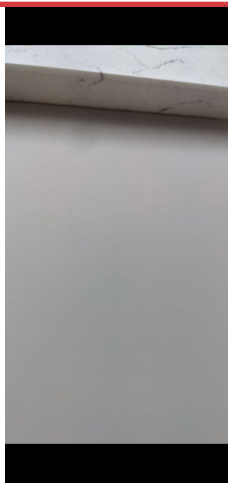
ISSUE 133

Location Understair Cupboard
Missing section



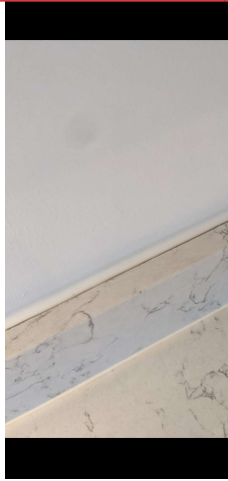
ISSUE 134

Location Kitchen
Switch damage



ISSUE 135

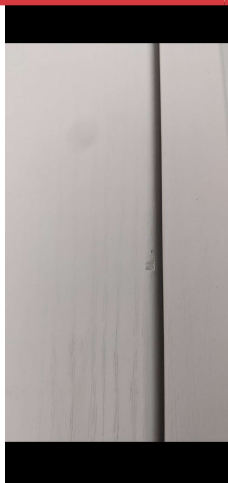
Location Kitchen
Wall damage



ISSUE 136

Location Kitchen

Mastic peeling



ISSUE 137

Location Kitchen

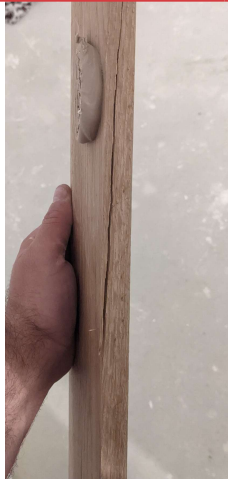
Unit Door damage



ISSUE 138

Location Kitchen

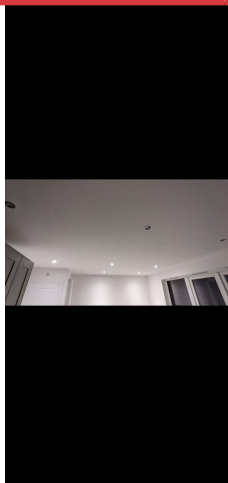
Oven door catches when open/shutting



ISSUE 139

Location Corridor

Step plate loose and damaged



ISSUE 140

Location Kitchen

Light alignment poor workmanship



ISSUE 141

Location Staircase

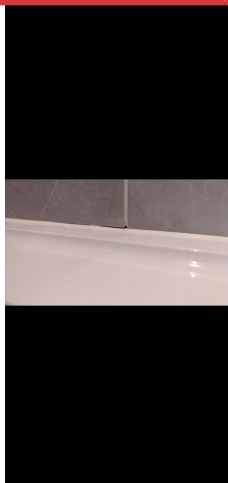
Poor workmanship



ISSUE 142

Location Staircase

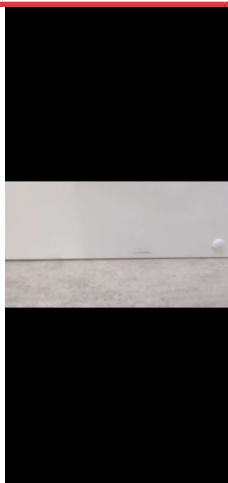
Overpaint to cap



ISSUE 143

Location Ensuite

Poor workmanship



ISSUE 144

Location Bathroom

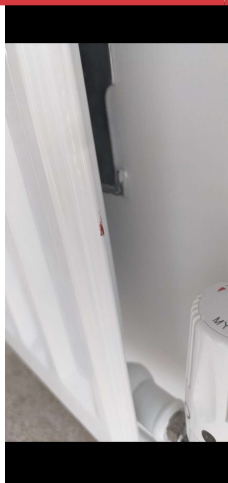
Bath panel damage



ISSUE 145

Location Bathroom

Bath panel poor workmanship



ISSUE 146

Location Landing

Radiator damage



ISSUE 147

Location Landing

Wall damage



ISSUE 148

Location Bathroom

Shower screen allows leak



ISSUE 149

Location Kitchen

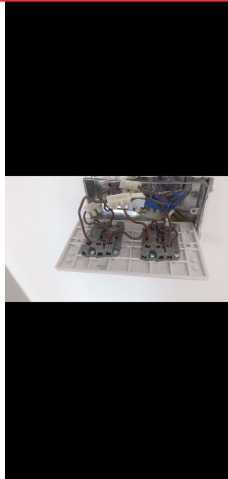
Poor alignment of doors



ISSUE 150

Location Kitchen

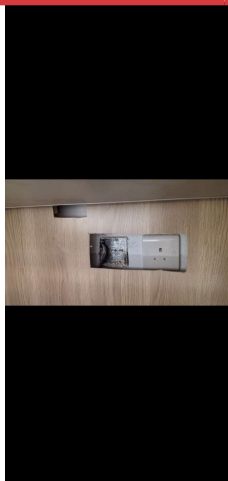
Poor workmanship



ISSUE 151

Location Kitchen

Socket not working, wired incorrectly



ISSUE 152

Location Kitchen

No blank plate fitted for cooker power



ISSUE 153

Location Bedroom 2

Trim damage

ISSUE 154

Location Bathroom

Leak to under sink

